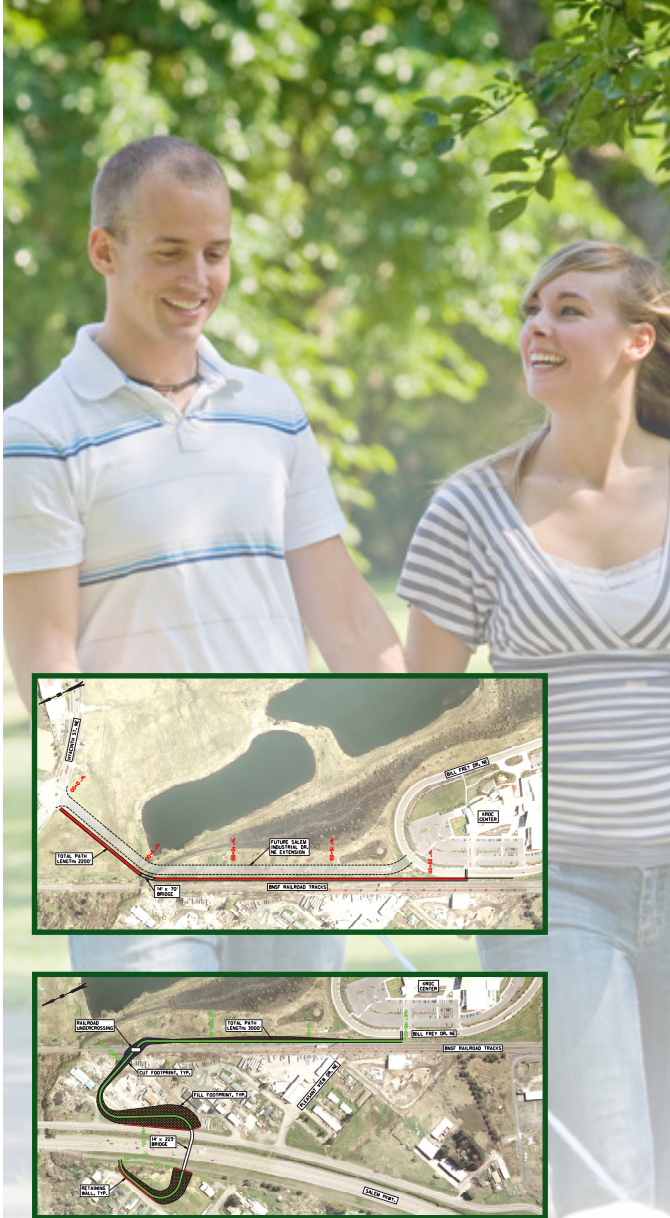


Salem Parkway/Kroc Center Access Study

Open House



Wednesday, February 6, 2013

4–6:30 p.m.

Claggett Creek Middle School

1810 Alder Drive NE, Keizer

Learn more about the project! Let us know what you think!

This study is looking at ways to improve bicycle and pedestrian circulation between Salem and Keizer with an emphasis on providing better access to the Salvation Army Kroc Center and the future Claggett Creek Natural Area. Help us narrow down the alternatives by taking the online survey at:

<http://www.kroconnections.org>.

MULTI-USE PATH ALTERNATIVES BEING CONSIDERED

Alternative "H"

- Multi-use path from Bill Frey Drive to Hyacinth Street
- \$1.5 to \$2 million

Alternative "UC"

- New bridge over Salem Parkway and undercrossing of the BNSF railroad tracks
- \$8.5 to \$9.5 million

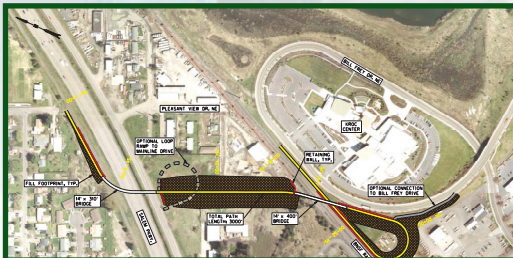
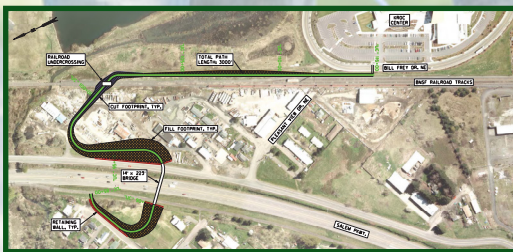
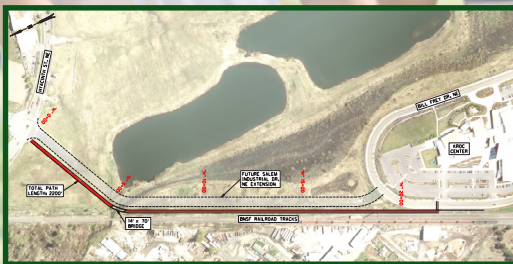
Alternative "SK"

- New bridge over Salem Parkway and new bridge over the BNSF railroad tracks
- \$14 to \$16 million

Other possibilities under consideration include a hybrid option using elements of the three alternatives, or no development.

The Salem Parkway/Kroc Center Access Study is a joint project between City of Salem, City of Keizer, Mid-Willamette Council of Governments, and Oregon Department of Transportation.

For further information about this proposed project or the open house event, please contact Judith Johnduff, Associate Transportation Planner, at jjohnduff@cityofsalem.net or at **503-588-6211**.



Si necesita ayuda para comprender esta información, por favor llame 503-588-6211.

If you need help understanding this information, please call 503-588-6211.